



# Textured Recreations



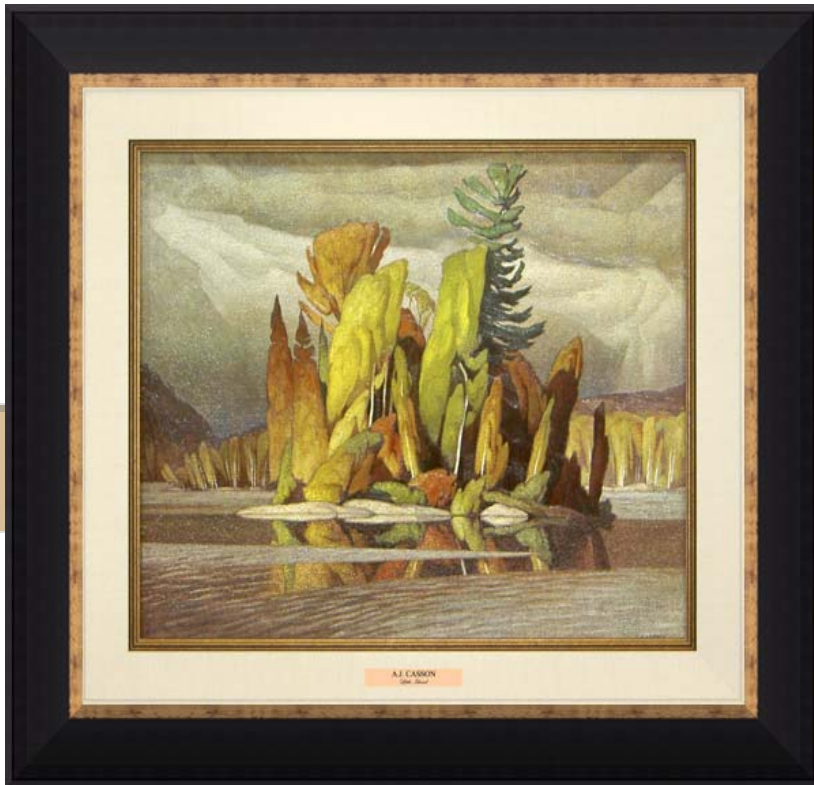
*"The White Pine" by A.J. Casson*

*Artwork of Tom Thomson  
& The Group of Seven*

# Textured Recreations

SIZE: 28" x 32"  
Sizes May Vary Slightly

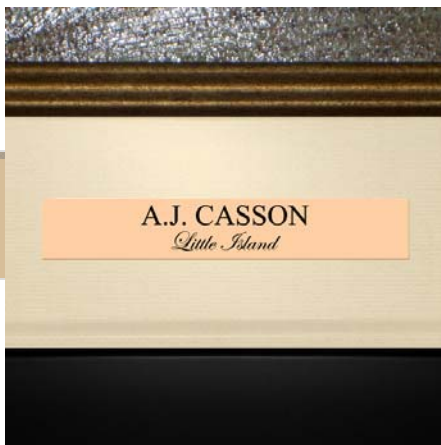
WITH ASSORTED AVAILABLE HISTORIC CANADIANA IMAGES



Introducing our new  
“Textured Recreations”  
line of Historic Canadiana  
framed artwork.

Please see the following  
pages to view all available  
images by Tom Thomson  
& The Group of Seven.

“Textured Recreations”  
are coated with a resistant  
acrylic gel which hardens  
to a stunning textured  
finish.



## AVAILABLE MOULDING STYLES



327  
MAHOGANY



327  
BLACK (WALNUT LIP)



327  
SATINWOOD



8255  
MAHOGANY



530  
CHAMPAGNE

Each piece is accented by  
an “Artist & Title” name  
plate below the artwork.

# Textured Recreations

SIZE: 28" x 32"  
Sizes May Vary Slightly

## ASSORTED AVAILABLE IMAGES



**AUTUMN ON THE YORK RIVER**  
A.J. CASSON  
TRAC01



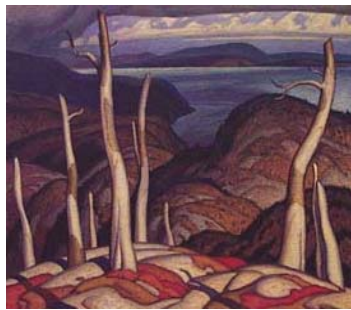
**BON ECHO, LAKE MAZINAW**  
A.J. CASSON  
TRAC02



**PRELUDE**  
A.J. CASSON  
TRAC03



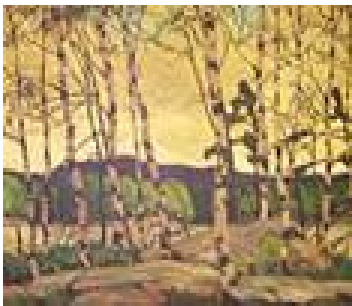
**WHITE PINE**  
A.J. CASSON  
TRAC04



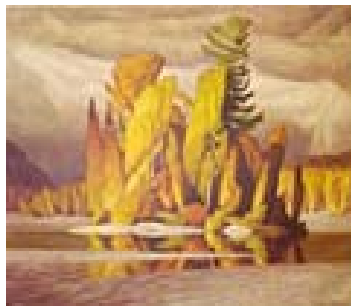
**OCTOBER, LAKE SUPERIOR**  
A.J. CASSON  
TRAC05



**ROCK POOL, CLOCHE HILLS**  
A.J. CASSON  
TRAC06



**COOL WEATHER**  
A.J. CASSON  
TRAC07



**LITTLE ISLAND**  
A.J. CASSON  
TRAC08



**BLUE HERON**  
A.J. CASSON  
TRAC09

# Textured Recreations

SIZE: 28" x 32"  
Sizes May Vary Slightly

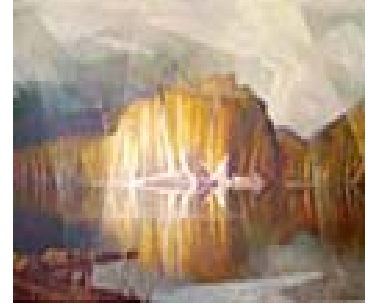
## ASSORTED AVAILABLE IMAGES



**SUMMER STORM**  
A.J. CASSON  
TRAC10



**MORNING MIST, ROUGE RIVER**  
A.J. CASSON  
TRAC11



**MIST, RAIN & SUN**  
A.J. CASSON  
TRAC12



**WOODLAND WATERFALL**  
TOM THOMSON  
TRTT01



**LAKE & RED TREES**  
TOM THOMSON  
TRTT02



**COUNTRY ROAD**  
A.J. CASSON  
TRAC13



**SPRING IN ALGONQUIN PARK**  
TOM THOMSON  
TRTT03



**THE CANOE**  
TOM THOMSON  
TRTT04



**SOUTH SHORE, CANOE LAKE**  
TOM THOMSON  
TRTT05

# Textured Recreations

SIZE: 28" x 32"  
Sizes May Vary Slightly

## ASSORTED AVAILABLE IMAGES



**WINTER SUN**  
A.J. CASSON  
TRAC14



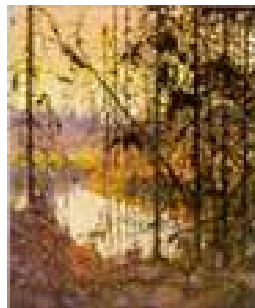
**SPLIT ROCK, GEORGIAN BAY**  
TOM THOMSON  
TRTT06



**THE RED MAPLE**  
A.Y. JACKSON  
TRAJ01



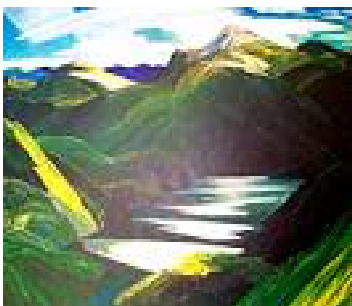
**THE JACK PINE**  
TOM THOMSON  
TRTT07



**NORTHERN RIVER**  
TOM THOMSON  
TRTT08



**SAINT TITE-DES-CAPS**  
A.Y. JACKSON  
TRAJ02



**LIGHT & SHADOW**  
F. CARMICHAEL  
TRFC01



**THE WEST WIND**  
TOM THOMSON  
TRTT09



**WOOD INTERIOR WINTER**  
TOM THOMSON  
TRTT10

# Textured Recreations

SIZE: 28" x 32"  
Sizes May Vary Slightly

## ASSORTED AVAILABLE IMAGES



**TAMARACKS**  
**TOM THOMSON**  
TRTT11



**SUMMER CLOUDS**  
**TOM THOMSON**  
TRTT12



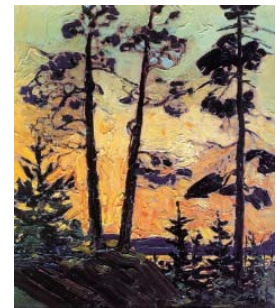
**SPRING FRENCH RIVER**  
**TOM THOMSON**  
TRTT13



**RED SUMAC**  
**TOM THOMSON**  
TRTT14



**RAGGED LAKE**  
**TOM THOMSON**  
TRTT15



**PINES AT SUNSET**  
**TOM THOMSON**  
TRTT16



**BURNT AREA RAGGED ROCKS**  
**TOM THOMSON**  
TRTT17



**FROST LADEN CEDARS**  
**TOM THOMSON**  
TRTT18



**PINE ISLAND**  
**TOM THOMSON**  
TRTT19

# Textured Recreations

SIZE: 28" x 32"  
Sizes May Vary Slightly

ASSORTED AVAILABLE IMAGES



IN THE NORTHLAND  
TOM THOMSON  
TRTT20



*The "Canadian" brand name*

**Northland Art Company**  
**60 Bullock Drive, Markham, Ontario L3P 3P2**  
**[www.northlandart.com](http://www.northlandart.com)**  
**Phone: 905-294-1104**  
**Customer Service Toll Free: 1-866-744-5044**